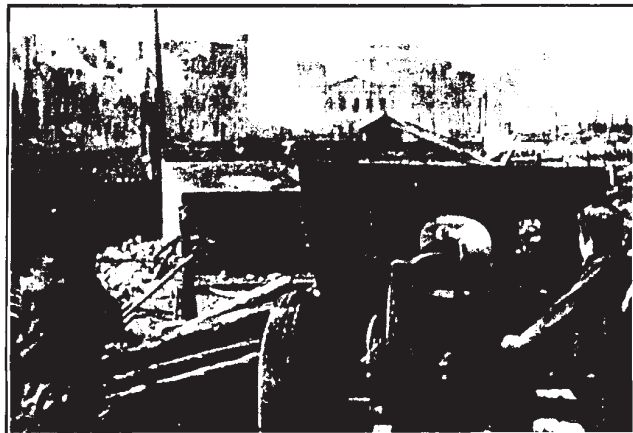


THE LAST ATTACK

SCENARIO ASL TAC 66

Translated by Coastal Fortress Gaming Group



VICTORY CONDITIONS: The Germans win at game end if they control ≥ 5 more stone building Locations they controlled at setup.

BERLIN, ALSENSTRASSE, 30 April 1945:

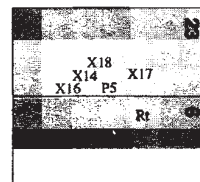
The battle for the Reichstag was no longer in doubt and the only remaining question was the date the former parliament would fall. The situation was desperate but the defenders still held. A new Soviet attack was launched at 1130 under the shelling of German guns firing from the Kroll Opera and soon the infantry reached the anti-tank ditch and the edge of the Alsenstrasse. In the face of this danger, the Germans quickly gathered a counterattack force: a battalion of marine cadets.

BOARD PLACEMENT:

BALANCE:

- Replace the 9-1 leader with a 9-2 leader in the German OB

- Add a 6-2-8 and a LMG to the Russian group that sets up on/adjacent to 23Z2

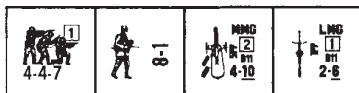


★ RUSSIANS set up first	1	2	3★	4	5	6	7	END
✚ GERMANS move first								



Elements of 525th Infantry Regiment [ELR:4]

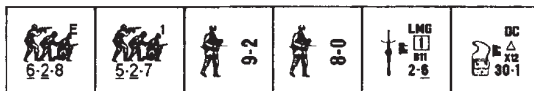
set up south of the Canal on/west of hexrow R {SAN:4}:



4

Other elements of 525th Infantry Regiment

set up on/adjacent to 23Z2:



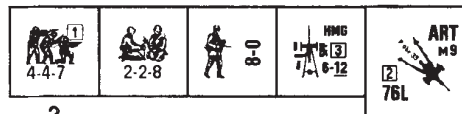
4

4

2

Elements of 171st Division

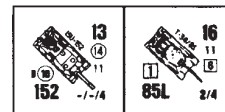
set up north of the Canal on/between hexrows Q and U:



2

Armored support from 79th Corps

enter on Turn 3 on 23Y10:



Elements of Kriegsmarine Cadet Battalion [ELR:2]

set up south of the Canal on/east of hexrow O {SAN:4}:



12

3

2

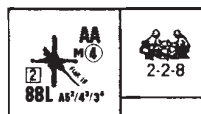
Elements of the SS and the Volksturm

set up in building 6L10 (Reichstag overlay):



2

Set up on/east of hexrow N:



Scenario Design: Jean-Luc Béchenec '94

SSR:

- EC are moderate with no wind at start. The only bridge is at X3. Woods are Shellholes. All buildings are Stone. Single story buildings are Stone Rubble. Orchards are out of season. Place the following overlays: X15 in 6Z7-Z6, X16 in 23X0-W1, X14 in 23U3-U2, X18 in 23S4-R3, X17 in 23O4-O5, Rt in 6L10-K10, OG3 in 6N5-M6 and P5 in 23Q1-R1. Buildings 23Y7, X15 and X16 have playable rooftop locations. Buildings X14, X15, X16 and L10 (Reichstag) have all their locations (EXC: eventual rooftop) fortified (B23.9).
- Place 4 Shellholes in 23P3, 23P4, 23Q4 and 23Q5. Place 6 AT-Ditches from 6Q5 to 6Q10. These AT-Ditches are flooded and the MF cost to enter/exit is 3MF + COT instead of 2 (see B27.56).
- Because of the dust raised by the incessant shelling of the area, Mist (E3.32) applies.
- The 88L is under Ammo Shortage. Germans have a Level B Booby Trap capability (B28.9) south of the Canal.

AFTERMATH: The Alsenstrasse was crossed under enemy fire and the Cadets seized a foothold in the buildings on the western side of the avenue. After a promising start, the counterattack collided with elements of the 525th Infantry Regiment. Russian reinforcements quickly arrived to bolster the defense and soon the Germans were thrown back to their starting line with heavy losses. The last attack to delay the end of the Reich, from now on reduced to a few square-kilometers, failed.